



TECH RIDER

JANVIER 2024

Contact: sam@leportfranc.ch

STAGE

Width 8.5 m

Depth 4.5 m

Height 3.5 m + Stagefloor 0.8 m

SOUND FOH

Yamaha QL5 48 tracks

CD Player Tascam CD200SB

Laptop Lenovo ThinkPad Edge E540

4x RJ45 CAT5e FOH – STAGE

P.A.

6x L-Acoustics Arcs 11 + 2x L'Acoustics 12XTI

4x L-Acoustics SB18i

2x L-Acoustics LA8

1x L-Acoustics LA4X

Monitoring

2x L-Acoustics LA4X

8x L-Acoustics 12XT

Microphones

2x Shure Beta52A

8x Shure SM58

6x Shure SM57

2x Shure Beta57

2x Shure Beta91A

2x Beyerdynamic M88TG

4x Sennheiser E906

2x Shure BETA 181/C

6x Sennheiser E604

4x Neumann KM184mt

Microphones HF

2x Sennheiser SK500 G3-B

2x Sennheiser SKM500-935 G3-B

DI

4x BSS AR133 (active)

6x Radial JDI MKIII (passive)

2x Radial JDI Duplex (passive) - stereo

DPA

2x V04099X-HI

2x DAD6001 -BC

2x BC4099

2x PC4099

2x DAD6034

VIDÉO

1x Beamer EIKI EK-600U

1x Écran à commande électrique 3x2m

Liaison régie - beamer VGA ou HDMI

LIGHTS

8x Clay Paky alphaspot 700 HPE (standard – lamp on)

4x Clay Paky alphaspot 300 HPE (standard – lamp on)

4x Robe Robin 300 LED (mode 5)

4x PAR LED CX-3 RGBW (8 channels)

6x Rampes ACL 4x250W

4x Découpes Selecon 1KW

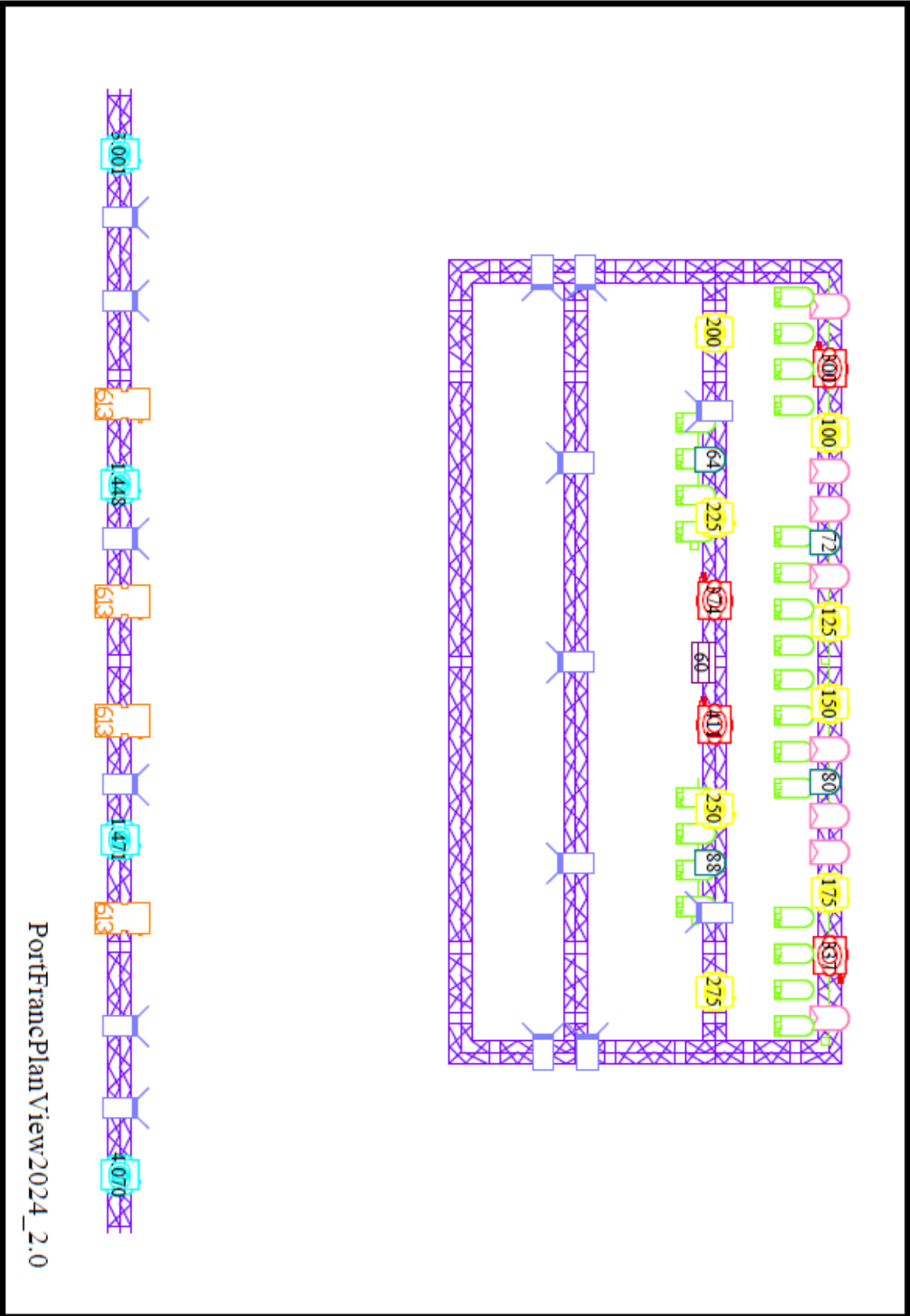
15x PC LDR Aria 1KW

8x PAR64 LDR 1KW

1x Martin ATOMIC 3000 (4 channels)

1x Hazer Look Unique 2

1x Grand MA2 ultralight + Touch screen ELO



PortFrancPlanView2024_2.0

BACKLINE

2x Pioneer CDJ1000

2x Pioneer CDJ2000NXS2

1x Pioneer DJM900NXS

1x Pioneer DJM S9

2x Technics MK2

Drum

GMS SL SERIE

10' 12' 14'

Snare 14' x 6'

Kick 20'

Cymbales

PAISTE 14' MINI CHINA

STAGG 13' HH

STAGG 16' CRASH

STAGG 20' RIDE

2x Cymbal Stand

Amplificateurs

FENDER blues de ville

FENDER hot rod delux III

AMPEG PF 500 + SVT 410 HE (USA)

